

SUMMER 2010 VOLUME 13

Finding a Carefree Life

"I made contact in August 2009 and by December I was living here," said Rose Rustin.

But Rose's relationship with Terwilliger Plaza began long before her arrival. She was a volunteer driver for NW Portland Ministries, often taking our members to appointments. In 2003 she helped a friend settle into her Tower apartment; she toured with another friend in 2006. Here she learned about pricing and the many floor plans while enjoying fresh baked cookies in our Deli.

For years she looked up at our building while working out at Duniway Park YMCA and considered her possible future there. When she started using OHSU's Wellness Center at the waterfront, Rose considered another community with access to the river and walking trails. "The layouts were a little more limited than at Terwilliger Plaza," she said. "But I wasn't ready yet, so I set it aside."

Within six months of her husband Arnold's death in 2008, Rose was diagnosed with post-polio syndrome. She knew she had to reconsider her living options. Since the future of extensive walking was uncertain, Rose chose Terwilliger Plaza. And she wanted to move while she could handle the details herself, make new friends and become involved in this community that offered the security of continuing care and 24-hour health services.

Story continued inside



"What moving here really did for me was it gave me the psychological freedom from worry about chores, home repairs and finances," says new member Rose Rustin. "It was transformational!"



Finding a Carefree Life cont. from cover

"I told the Sales Manager in August that she didn't need to 'sell' me on Terwilliger," said Rose. "I told her I was coming here!" The planning began. She selected her Heights apartment: 128 square feet on the sixth floor with large windows and a covered balcony facing the Willamette River and Mt. Hood unobstructed.

"But the closing would have to occur within 90 days, and I wasn't sure I could sell my Northwest Portland home that quickly," said Rose. "So the marketing office said they would keep me apprised on the availability of my choice."

October... Available! November... Available. In the first week of November, Rose had a dinner party. A guest asked if she might be interested in selling her house. She said, 'Yes,' and he left saying he would let her know. He called the next morning, and by December they had each closed on their respective sales.

"I moved into my apartment with the paint still drying," said Rose. "But it was the exact colors of the walls from my house! It was also the day of Portland's sudden snow storm that nearly shut down the city, but I was made welcome and found the staff very helpful in getting my car unstuck."

"I've already made close friendships with others," said Rose. "I use the Wellness Center daily for exercise classes and workouts, but I do have to pace myself."

Rose remains involved with Congregation Beth Israel, as well as the Goosehollow Family Shelter. But she has volunteered to be a TEC (Terwilliger Emergency Coordinator) for her floor, which prepares members to assist in times of emergencies.

"Moving here gave me the psychological freedom from worry about chores, home repairs and finances, as well

as the physical freedom of knowing I can walk out my apartment and not worry about anything," said Rose. "It was transformational!"

Rose's friends expressed concern that she left behind the home she and Arnold loved; some even felt sad for her. Until they visited and saw that she hadn't given up anything, rather she gained so much. "They thought I had 'stepped down' or 'settled', said Rose. "In truth, I got more than I ever thought."

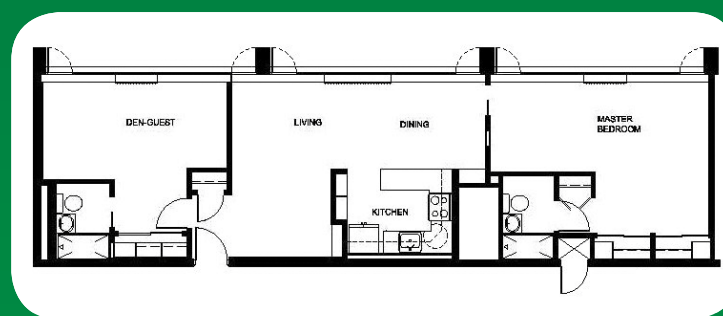
She found another freedom in knowing that Terwilliger Plaza wouldn't let her overbuy. "Once I gave them my financial information, and they told me what I could afford, I knew I was secure living in this beautiful two-bedroom apartment for at least twenty years," said Rose. "Even beyond that if you consider their policy that no member leaves for financial reasons."

"If I were to give one tip," she said, "it would be 'don't wait too long.' You don't want to lose control of the process, and making this move allowed me to move forward from my husband's death and start a new life. And I did it the way I wanted it done."

"I really love my remarkably carefree life!" ■

Two Bedroom Deluxe: Cozy and Stylish!

"One of the many benefits to my home is the generous space that made the downsizing and moving transition extremely gracious and smooth," said our member of 7 years, Shirley Phipps. Her gorgeous 2-bedroom deluxe on the 9th floor has a guest room. "It's perfect for when my son visits from Seattle," said Shirley. "It makes his trips convenient and more frequent."



Members can choose from numerous sizes, layouts, locations, and views. Of all the choices, the 2-bedroom deluxe is one of the most-requested. This handsomely appointed 1,134 square foot layout exceeds expectations, with bright, airy interiors, plenty of storage, a smart floor plan and important safety features.

Terwilliger Plaza has always provided a variety of floor plans that cater to each member's unique needs and desires. Apartments range from 378 square feet to 1,895 square feet. Studio, one, two, and three bedroom configurations are each meticulously conceived to complement your retirement lifestyle.

Call us today to schedule a personal tour and lunch. See for yourself the spacious styles of these move-in ready homes. With more than 18 floor plans to select from, there truly is something for everyone. ■

Open House Summer Series!

- Thursday, July 29, 2010, 1:00 PM
"Brain Health" Lecture by Roger Anunsen
- Thursday, August 26, 1:00 PM
"Learning and Memory" Lecture by Dr. Larry Sherman of OHSU
- Thursday, September 23, 1:00 PM
Wellness Activity by Infinity Rehab

AT EVERY OPEN HOUSE:

- Tours of Apartments and Community
- Hors d'oeuvres Reception
- Complimentary Valet Parking

RSVP:

Please call for reservations as space is extremely limited. **503.299.4716**

Terwilliger Plaza in Oregon Top 100!

Terwilliger Plaza has been named one of the 100 Best Green Companies to Work For in Oregon by Oregon Business magazine. The second annual green survey was part of the 100 Best Companies and 100 Best Nonprofits surveys conducted last fall and spring. Per Oregon Business, "the ranking shows that Terwilliger Plaza has implemented a variety of green policies, and that employees place a high value on sustainable practices." A record-breaking 503 companies and nonprofits participated and more than 26,000 employees completed the survey.

Terwilliger Plaza employees are committed through sustainable practices by maintaining recycling programs, installing automatic controls to lower lights, and utilizing public transit.

Every department also employs its own practices. Food Services utilizes take-out products made from corn, potato starch, and bamboo fiber. Transportation Services offers members time to shop as a group on our bus, and Marketing chooses recycled paper and vegetable-based inks for printing materials. ■



Yes, I'd like to learn more about Terwilliger Plaza.

- Reserve ___ seat(s) for me at the "Brain Health" lecture on July 29.
- Reserve ___ seat(s) for me at the "Learning & Memory" lecture on Aug. 26.
- Reserve ___ seat(s) for me at the "Wellness Activity" program on Sept. 23.
- I would like to arrange for a private tour of the community.

NAME _____

ADDRESS _____

CITY _____ STATE _____ ZIP _____

PHONE (DAY) _____ PHONE (EVENING) _____



'Terwilliger Living' Promotions

SUMMER 'MOVE-IN NOW' PRICING INCENTIVES For a limited time, Terwilliger Plaza is offering potential members various Move-in Pricing Incentives. We want to allow our future Members the flexibility and time to adjust to the current economic reality while enjoying the benefits of living in a secure and social community like Terwilliger Plaza.

MEMBERSHIP DEFERRAL PLAN Upon approval, this option allows Members to defer payment up to 50% of their membership fee until their house sells. A lien is placed on the member's primary residence in the state of Oregon, and members have up to one year, interest free, to pay the remaining balance of the membership fee.

DISCOUNTED PRICING On select one, two, and three bedroom apartments, Members may receive three or six months of no monthly maintenance fees, depending upon apartment availability and date of possession. For some apartments, this could result in a \$19,000 savings!

MEMBERSHIP REFERRAL PLAN Know someone who lives at Terwilliger Plaza? If the Member refers you, and you move into Terwilliger Plaza, you both become eligible for a \$2010 credit towards your monthly maintenance fee.

PETS NOW ALLOWED Terwilliger Plaza has a limited number of apartments for those who want to have their feline friend join them here.

